

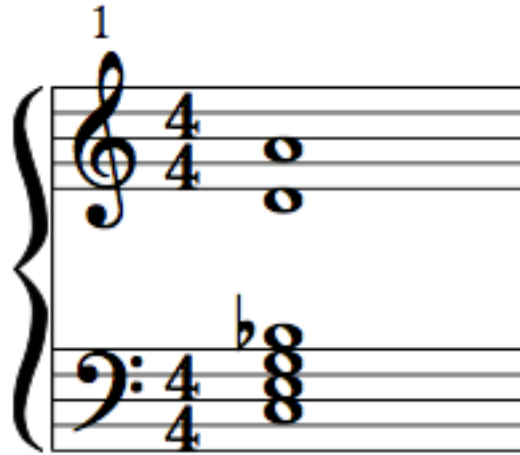


THE MIXOLYDIAN MODE AND THE DOMINANT 13 CHORD



The above example is the C Mixolydian Mode. The Mixolydian Mode is the 5th mode of the Major Scale. This particular Mixolydian Mode is related to the F Major Scale. Notice both scale have one flat in their respective keys (Bb). Play the scale on a keyboard and sing along until you can imagine its sound even when you are not playing.

The intervallic scale formula for the Mixolydian mode is Root, M2, M3, P4, P5, M6, m7, Octave.



This chord is a dominant 13 chord (13). Notice the 11th of the chord (F) is missing. The natural 11th is often avoided in dominant 11 and dominant 13 chords (take note guitarists, pianists, and bassists!). Play the chord on a keyboard until it is internalized.

The Mixolydian Mode is the go-to scale to use over a 7, 9, and 13 chord. Practice this C Mixolydian Mode with a C7 backing track. Don't forget to move this into other keys and practice those as well!

Musical Examples of the Mixolydian Mode

For a change of pace, here are some examples of the Mixolydian Mode in the Rock genre.

AC/DC - It's a Long Way to the Top (If You Wanna Rock and Roll

Joe Satriani - Summer Song

Guns and Roses - Sweet Child o' Mine

